

A TIMELESS HOME

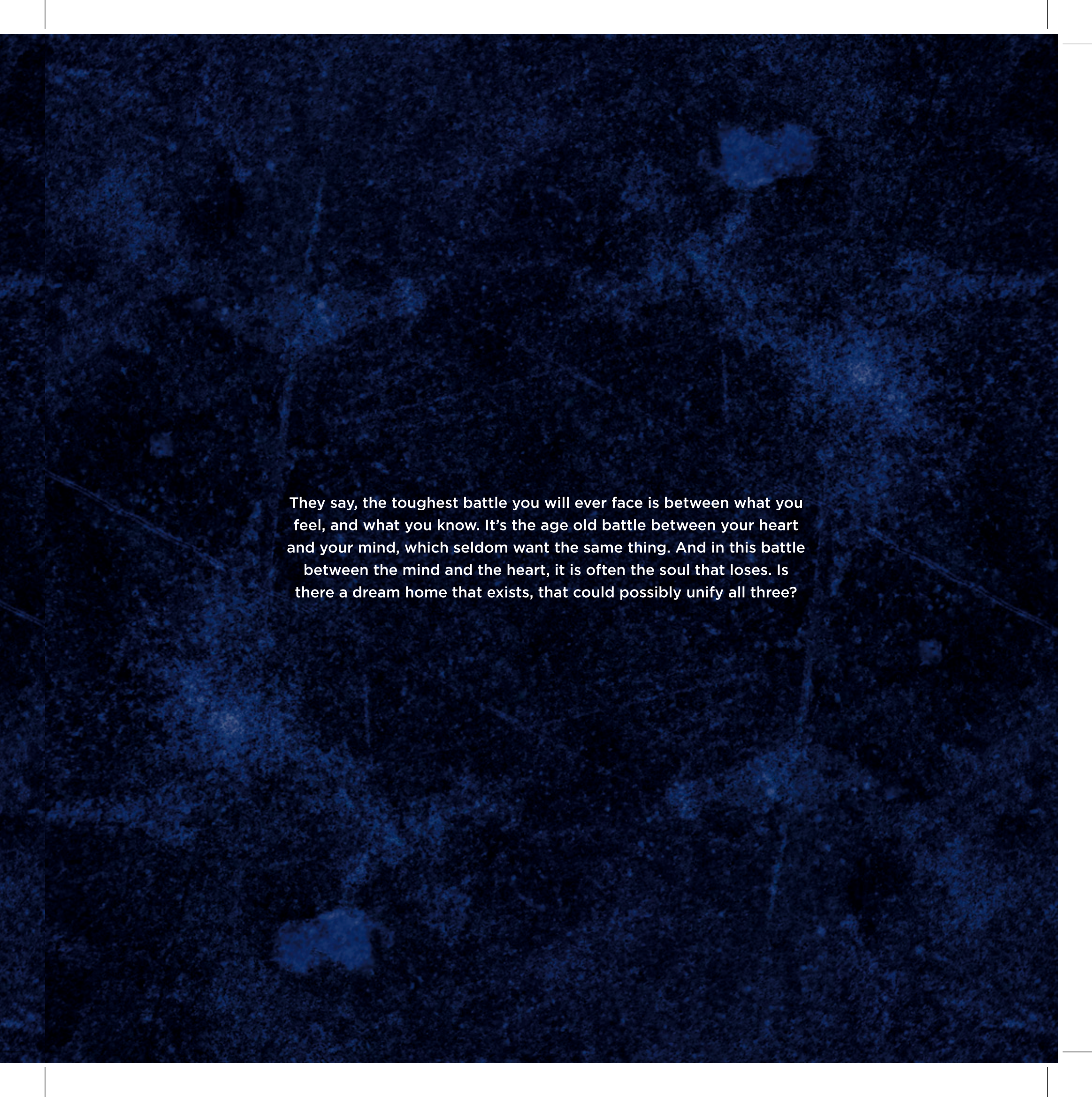
BODY
HEART
& SOUL

COME TOGETHER



ouvvada, gajuwaka, vizag

WHAT IF
BODY,
MIND,
HEART
& SOUL
SHARE THE SAME DESIRE?

The background is a dark blue, textured surface with a subtle grid pattern. The texture is grainy and uneven, with some lighter blue patches and darker blue areas. The grid lines are faint and intersect to form a series of squares across the entire page.

They say, the toughest battle you will ever face is between what you feel, and what you know. It's the age old battle between your heart and your mind, which seldom want the same thing. And in this battle between the mind and the heart, it is often the soul that loses. Is there a dream home that exists, that could possibly unify all three?

THERE'S A VOICE, THAT
DOESN'T USE WORDS.
IT'S YOUR

MIND

Sometimes, you've got to listen to your MIND, in order to save your HEART. When it comes to purchasing a dream home, this is no different. A rational MIND expects the very best - from the reputation of the developer to the quality of the home, from modern amenities to the safety and security of your loved ones. It's always important to listen to what the MIND wants.



Peace of MIND is a state of mind.

Your Mind searches for freedom from the unexpected. An assurance that can only come when your future home is from the stable of a reputed developer with a legacy of delivering the very best homes with no compromises or excuses.

Stunning views that free your MIND.

As the age old saying goes, climb mountains, not so that the world can see you, but so that you can see the world. It's true...the best views come after the hardest climb. No home can truly appeal to the Mind without some amazing views.





MINDFUL planning for every member of the family.

Having somewhere to go is a house, having someone there who you love is a home. And a dream home is a place where every member of the family has amenities at their doorstep. Amenities for our elders as well as amenities for our children will ensure that a home becomes a legacy and one which transcends time itself.

A magnificent campus to inspire your MIND.

Your Heart wants roots, but your Mind wants wings. Our Minds want what's new, modern, state of the art, the very best in technology to make our lives better. The Mind wants a world class taste of aesthetics, which only world class architects can deliver - like they do in world class apartment complexes.



THE
MIND

WANTS EVERYTHING
GOOD ABOUT
MODERN APARTMENTS.

- Ample security
 - Great views
 - Modern amenities for children
 - Modern amenities for elders
- Ample parking facilities for guests
 - Domestic help at your fingertips
 - Lower maintenance charges
 - Modern aesthetics

HOWEVER...



ouvvada, gajuwaka, vizag

DREAMS EXPRESS
WHAT YOUR
SOUL
IS TELLING YOU.

Ever wondered, why we call it a DREAM home? It's because this is where our SOUL feels at home, not our MIND. When we quite our MIND, our SOUL will speak.

As important as it is to choose a home with your MIND, it's equally important to listen to your SOUL.

The SOUL needs more space than the body.

The Soul feels at home when you have your own space. A place that's truly yours. The Soul demands spaciousness - to live in grandeur - like one would in a villa.



A SOULFUL home is where generations live together.

Your Soul speaks of many generations, living in harmony, under a single roof. A bond formed by sharing each other's lives and joys.



Privacy your SOUL can immerse in.


Your Soul seeks a place that's exclusively for you and your loved ones. It's a place where your personal life is personal. Which is why the privacy of a home can never be matched by a modern apartment complex. Or can it?



THE
SOUL
WANTS EVERYTHING GOOD
ABOUT PRIVATE
STAND-ALONE HOMES.

- Comfort sized Homes
- Private spaces with no neighbours
- Homes where generation have lived
- Ample space for everyone to live freely
- Space for families to stay together

HOWEVER...

Aadya's
 **MANVITA
GRANDE**

ouvvada, gajuwaka, vizag

THE
SOUL
WANTS ROOTS,
THE
MIND
WANTS WINGS.
THE HEART CAN'T
BEAR THEIR BICKERING!

YOUR
HEART

KNOWS THINGS THAT YOUR
MIND AND SOUL CAN'T EXPLAIN.

While it's important to listen to your MIND and SOUL,
let's not forget about the HEART.

Where you grew up. always feels like home.

Your Heart knows your neighbourhood is a part of your family, it is where your home grew larger with new memories added every day.



WOULDN'T IT BE GREAT IF

BODY,
HEART,
MIND,
& SOUL

COME TOGETHER?

At AADYA'S MANVITA GRANDE, we understand that our customers desire all the benefits of an apartment complex, like security, world class amenities and glorious views. But at the same time, the soul feels at home in a apartment that's private and spacious. Now get both! MANVITA GRANDE offers 2&3 bedroom, comfort sized apartments which provide the best of both worlds in the heart of STEEL CITY. Now, you never have to choose between your mind, heart and soul...





Introducing

Aadya's
MG MANVITA GRANDE
ouvvada, gajuwaka, vizag

BODY
of an Apartment,

SOUL
of a Home,

In the
HEART
of Steel City.

Five Blocks where grandeur is a habit.

AADYA'S MANVITA GRANDE
introduce you to new
5 levels of luxurious living. Together, they
host only 185 elegant apartments amidst 10,000 Sq. yards
granting families an executive sense of privacy
of world class amenities and a serene landscape.



ASTON
'A' BLOCK



BENTON
'B' BLOCK



CANTON
'C' BLOCK



DENTON
'D' BLOCK



EVERTON
'E' BLOCK





MASTER PLAN LEGEND

A Entrance Gates
In & Out

B Kids Pool

C Family Pool

D Family Deck

E Multi Purpose Court

F Club House

G Landscape Garden

H Jagging Track

I Fitness Corner

J Family Lawn

K Gazebo

L Children's Play
Area

M Senior Citizen Corner

N Water Fature

O 2nd Gate
In & Out



Master Plan



Road

Road







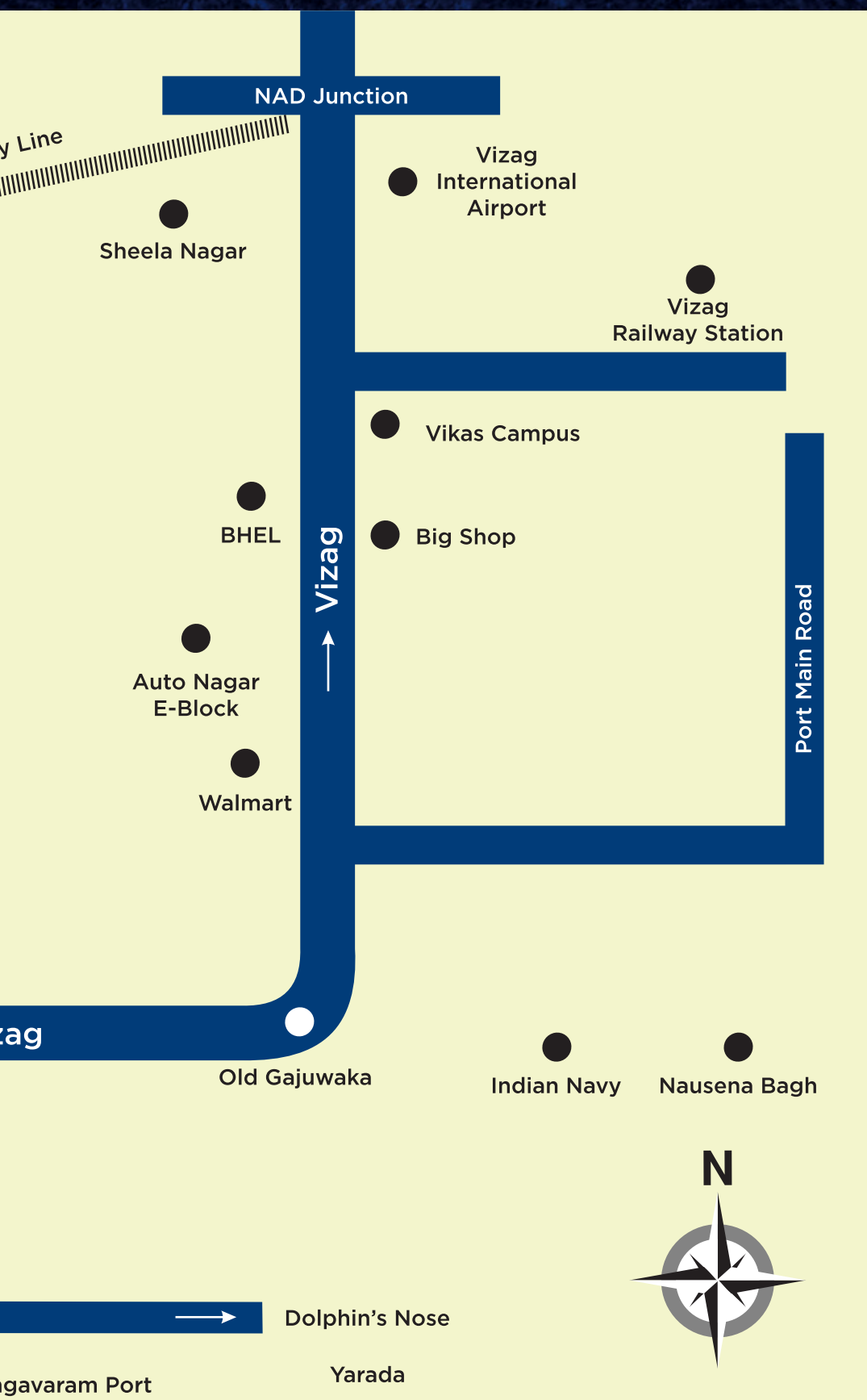
EXPLORE THE
HEART
of STEEL CITY IN DEPTH.

More than just a prestigious address, this is where your heart feels at home, where your children will soon build happy memories to match your own.

Location Map

(Not for Scale)





Your neighbourhood places needs and wants within easy reach, for every member of your family.

PUBLIC TRANSPORTATION

- Duvvada Railway station - 05 min drive
- Airport - 20 min drive

HOSPITALS

- TATA Cancer Hospital - 05 min drive
- KIMS Hospital - 15 min drive

SCHOOLS & COLLEGES

- Delhi Public School - 05 Min drive
- DAV School - 05 min drive
- Vignan College - 05 min drive

SHOPPING MALL & ENTERTAINMENT

- Gajuwaka CMR Shopping mall - 10 min drive
- D Mart - 05 min drive

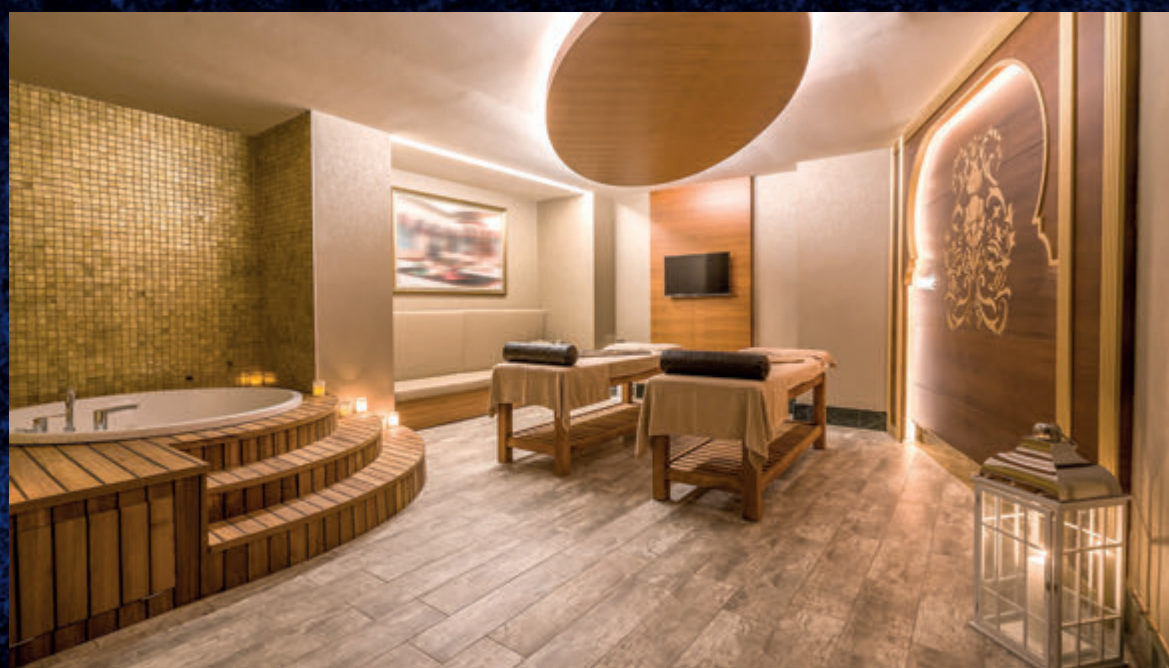
OFFICES & INDUSTRIES

- VSP Steel plant - 05 min drive
- BHEL - 10 min drive
- Pharma city - 10 min drive
- NTPC - 20 min drive
- Acchyutapuram SEZ - 35 min drive
- Duvvada SEZ - 05 min drive



Embrace the indulgence your mind deserves.

A 3 level Clubhouse offers an array of luxury amenities to please every age, from unwinding in the pool or jacuzzi to working out in the gym or de-stressing in a spa.



Clubhouse Amenities

Aadya's Commercial space spread over 2 levels.
Manvita Grande Clubhouse spread over 3 levels comprising of the following:

- Pharmacy
- Gym
- Aerobic Room
- Party Hall
- Supermarket
- Indoor Games
- Table Tennis
- Toddlers Room
- Spa
- Beauty Parlour
- Swimming Pool
- Kids Pool





AADYA'S NEST

GV
ARCO

TYPICAL FLOOR PLANS & 3D VIEWS



ASTON
'A' BLOCK



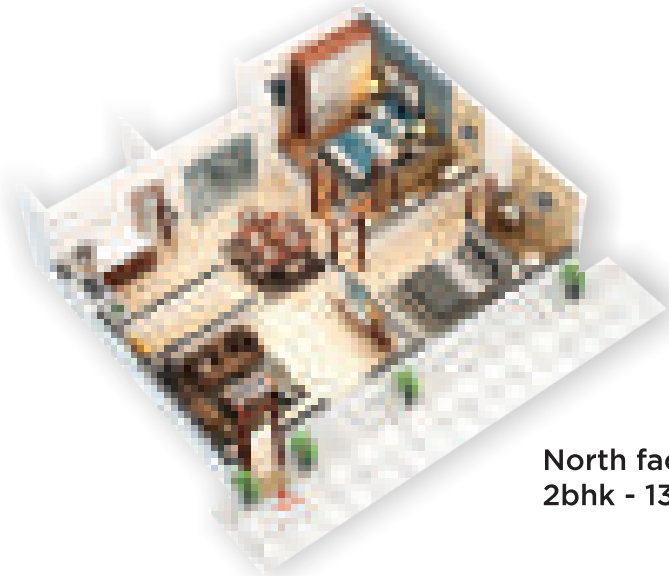
FLAT NO.	A1	A2	A3	A4	A5	A6	A7	A8	A9	A10
AREA (sft.)	1665	1665	1250	1250	1250	1665	1250	1250	1250	1250
FACING	East	West	West	West	West	West	East	East	East	East



BENTON

'B' BLOCK

TYPICAL FLOOR PLANS & 3D VIEWS



North facing
2bhk - 1300 Sqft.



West facing
3bhk - 1665 Sqft.

FLAT NO.	B1	B2	B3
AREA (Sft.)	1665	1300	1300
FACING	West	North	North



CANTON
'C' BLOCK

D

TYPICAL FLOOR PLANS & 3D VIEWS



FLAT NO.	C1	C2	C3	C4	C5	C6	C7	C8	C9	C10
AREA (sft.)	1665	1665	1250	1250	1250	1250	1250	1175	1250	1250
FACING	East	West	West	West	West	West	East	East	East	East



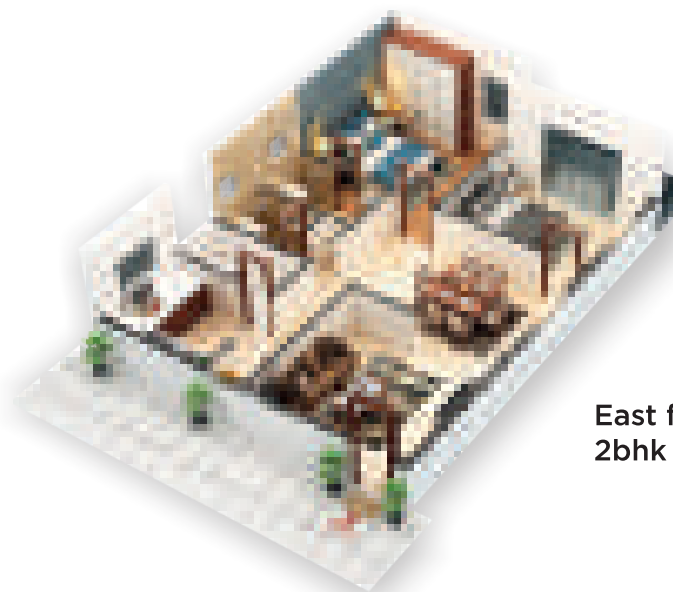
DENTON

'D' BLOCK

TYPICAL FLOOR PLANS & 3D VIEWS



North facing
2bhk - 1300 Sqft.



East facing
2bhk - 1250 Sqft.

FLAT NO.	D1	D2	D3	D4
AREA (sft.)	1300	1300	1300	1550
FACING	North	North	North	East

TYPICAL FLOOR PLANS & 3D VIEWS

CHOOSE YOUR
DREAM HOME

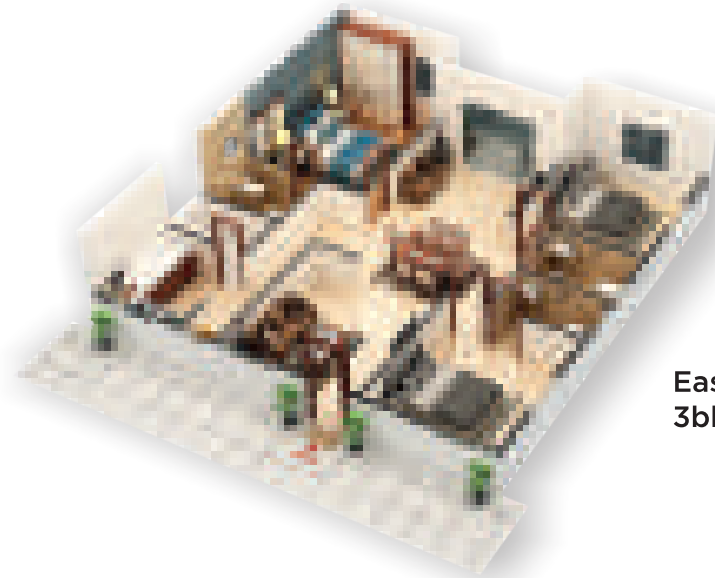


FLAT NO.	E1	E2	E3	E4	E5	E6
AREA (sft.)	1665	1665	1250	1250	1250	1250
FACING	East	West	West	West	West	West



EVERTON

'E' BLOCK



East facing
3bhk - 1665 Sqft.



West facing
2bhk - 1250 Sqft.

E5	E6	E7	E8	E9	E10
1250	1250	1250	1250	1250	1250
West	West	East	East	East	East

Amenities & Facilities in Manvita Grande

- Children's Play Area
- Elders Park
- Jogging Track
- Shuttle Badminton Court
- Volleyball Court
- Landscaped Area
- Pool and Pool Deck
- Rain water harvesting
- Sewage treatment plant
- Visitor's car parking
- Toilet for drivers
- Gazebo
- Staircases and elevators
- Well-designed lift Areas on all floors
- Power back-up for common area lighting and elevators
- Eight elevators in all five blocks
- Well-designed entrance lobby
- Boom barrier at important locations
- RFID reader for secured parking
- Visitor's management system
- Power back-up for common area of the project
- Earthquake resistant design as per Seismic Zone 3 norms
- 24 x 7 security systems with centrally monitored CCTV cameras

SPECIFICATIONS



STRUCTURE :

R.C.C. framed structure. Footings columns, beams and slabs in R.C.C. M25 grade concrete or higher grade concrete



SUPER STRUCTURE :

First class brick work in AAC/CLC/ cement mortar



PLASTERING : Internal: Double coat with sponge finish.

Exterior: Plastering in two coats with sponge finish



DOORS :

Main Door: Teak wood frame and teak wood door shutters as per the design provided.

Internal Doors: Teak wood frame and HDF designer skin molded paneled door shutter with standard fittings & locks

Windows: UPVC glazed windows with glass panels fitted with standard hardware



PAINTING :

External: Exterior texture paint with exterior emulsion paints of Asian / Equivalent

Internal: Smooth Wall putty finish with acrylic emulsion paints of Asian / Equivalent over a coat of primer



FLOORING:

First quality Vitrified tiles in living room, bedrooms & kitchen



KITCHEN :

Granite platform with stainless steel sink provision for fixing water purifier, ceramic tile dado up to 2' height above kitchen platform. Provision for exhaust & Chimney



TELECOM : Telephone point in drawing room



BATHROOMS AND TOILET :

- Pedestal Wash Basin
- WC flush tank of Hindustan / Parry make or equivalent
- Hot and cold mixer with shower
- Provision for geysers in toilets
- All fittings are chrome plated
- Tiles up to 7' height
- Ceramic non slippery flooring



ELECTRICAL :

Concealed wiring of Standard makes in Fire retardant in conduits for lights, fan, plug and power plug points

- Power outlets for air-conditioners in all bedrooms
- Power outlets for geysers in all bathrooms
- Power plug for cooking range chimney, refrigerator, micro wave ovens, mixer / grinder in kitchen
- Plug points for refrigerator, TV & audio systems etc.
- 3-phase supply for each unit and individual meter boards
- All electrical fittings of Standard makes.



CABLE TV :

Provision for cable connection in all bedrooms and living room



LIFT : Passenger & Goods lifts



INTERNET: Provision for Internet



GENERATOR : 100% Power Back up except ACs, Geysers & Power plugs.



Corporate Office

AADYA EDIFICE INDIA PVT. LTD.

Plot No. D8. Road No. 9, Film Nagar, Jubilee Hills, Hyderabad - 500033, Telangana.

AP Office

1st FLOOR, # 9-21-17/2/1, CBM COMPOUND, VIP Road, Siripuram, VISHAKHAPATNAM - 530003, AP.

+91 40 23545199 / +91 98490 83489

e-mail: enquiry@aadyaee.com

www.aadyaee.com

Project Address



Adj. to Rajeev Nagar VUDA Colony, Near Aganampudi Toll Plaza, Duvvada,
Gajuwaka, Vishakapatnam, AP.



GV Associates

1st FLOOR , Plot No. 137, Road No. 3, Avenue - 3, Kakatiya Hills, Madhapur, Hyderabad - 500090.
Id : gvassociates1977@gmail.com. Ph: 040 29365269

Note : This brochure is purely a conceptual presentation and not a legal offering. The promoters reserve the right to make changes in elevation, specifications and plans as deemed fit. The Amenities depicted in the Master Plan and /or the Marketing Brochure are only indicative and subject to future variation/s & changes. The Developer reserves the right to add or delete any of the amenities or features shown in Master plan or brochure or change its location at its sole discretion. The Developer is wholly exempt from any liability on account of any claim in this regard. E &OE.